

Passion  
Knowledge  
Innovation



## Naval



## Fast displacement



## Yachting







# PRODUCTS

## DOORS

INDUSTRIAL DOOR

## HATCHES

ESCAPE HATCH

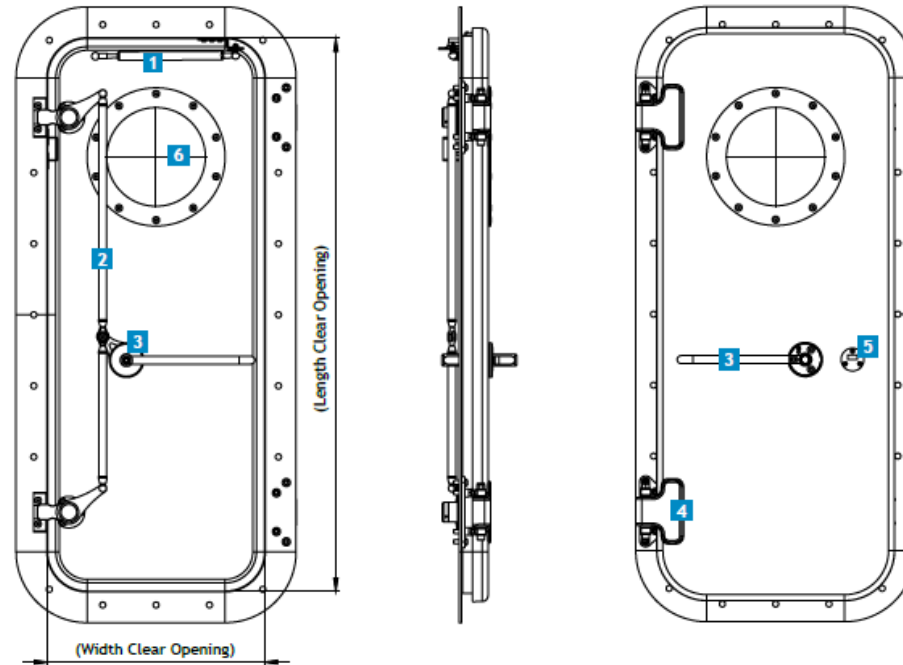
MULTIPURPOSE HATCH





- 1 Gasspring optional
- 2 Standard SST 316 reaction rods  
Carbon fibre optional
- 3 Wheel instead of barhandle optional
- 4 Open close switch location t.b.d.  
during engineering

- 5 Hook and catch optional,  
location t.b.d. during engineering
- 6 Porthole optional, also available  
square window on request
- 7 Padlock/rim-lock optional
- 8 EMI protection optional
- 9 Acoustic plate



## Specifications

- ▶ Opening Direction: Left/Right handed
- ▶ Clear opening: Length & Width
- ▶ Opening angle: 80-110 degree/180 degree  
(only with non-flush coaming)
- ▶ Door type: Non Certified/Weathertight/ Watertight  
(design pres. up to 30 kPa)
- ▶ Fire protection: No Fire protection/FRD 30/FRD60
- ▶ Coaming type: Non Flush/Flush
- ▶ Coaming mounting: Bolted/Welded/Glued
- ▶ Door finish: Primered/Painted
- ▶ Coaming finish: Primered/Painted/Powdercoated  
(based on material)





# PRODUCTS

## DOORS

INDUSTRIAL DOOR

## HATCHES

ESCAPE HATCH

MULTIPURPOSE HATCH

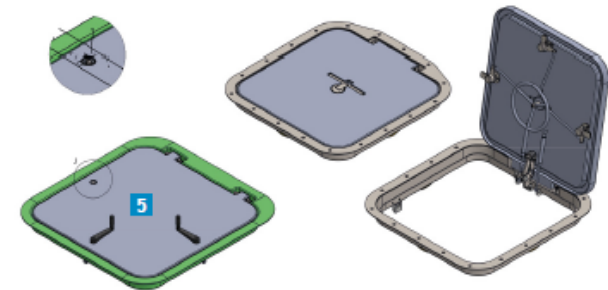
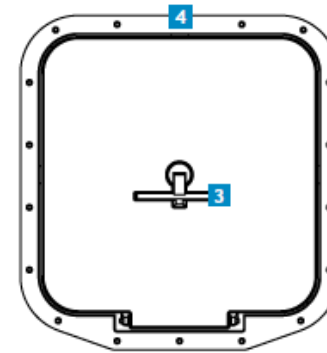
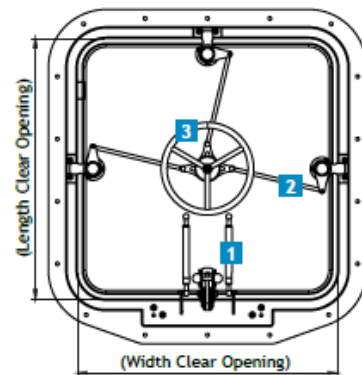


- 1 Gasspring (1 or 2) optional
- 2 Standard SST 316 reaction rods
- 3 Wheel instead of barhandle optional
- 4 Open close switch location t.b.d. during engineering
- 5 Non-Central locking instead of barhandle&wheel

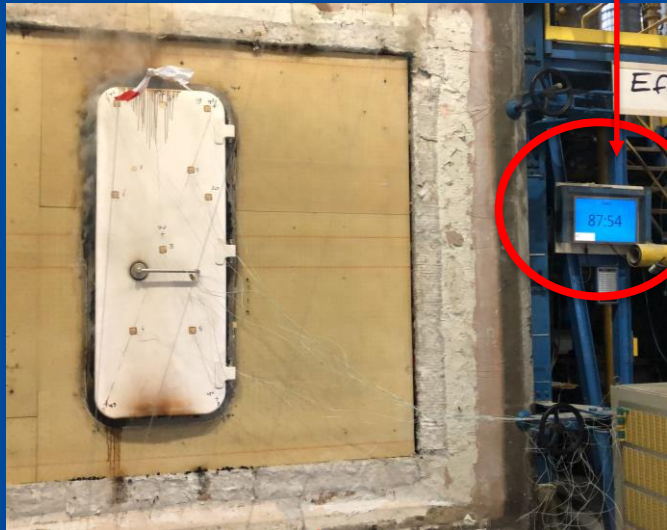
- 6 Hatch Holder
- 7 Non-Central locking version with removable crank
- 8 Padlock/rim-lock optional
- 9 EMI protection optional

### Specifications

- ▶ Clear opening: Length & Width
- ▶ Opening angle: 80-100 degree
- ▶ Door type: Non Certified/Weathertight/Watertight(design pres. up to 30 kPa)
- ▶ Fire protection: No Fire protection/FRD 30
- ▶ Coaming type: Non Flush/Flush
- ▶ Coaming mounting: Bolted/Welded/Glued
- ▶ Door finish: Primered/Painted
- ▶ Coaming finish: Primered/Painted/Powdercoated (based on material)

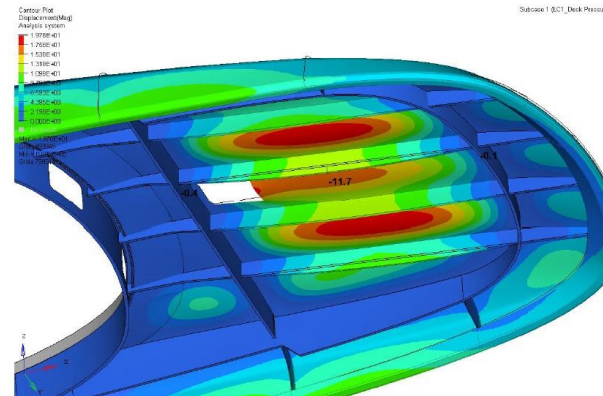


A60 Firerating equivalent



## Services & products:

- Pre-engineering / concept engineering (incl. weight calc.)
- Detail engineering (incl. FEA and FEM calc)
- Moulds
- Production of the elements
- Assembly of the elements
- Installation of the elements

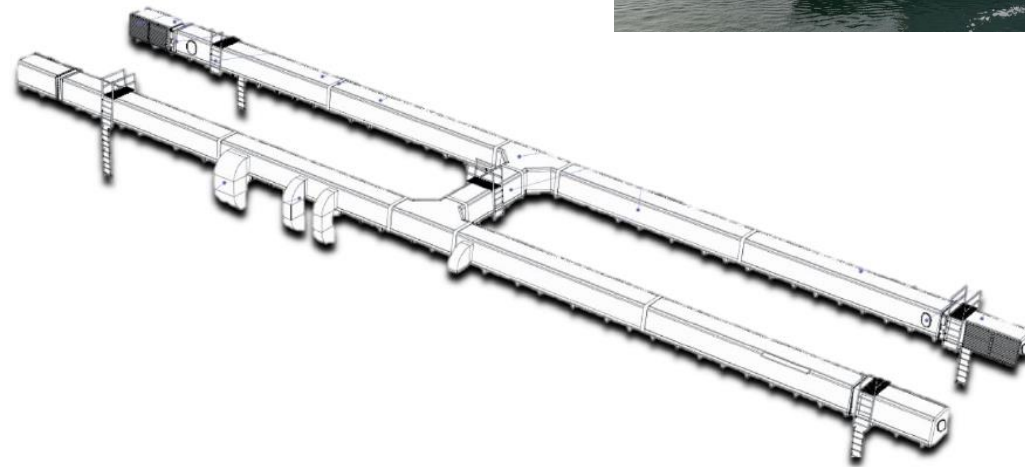


## Reference projects

*"VABO's exceptional communication and flexibility were key in achieving the success of the HMS Johan de Witt Mid-Life Update."*  
- Olaf van Kampen, Commit's Project leader for the MLU JWTT

### Composite ventilation duct (575m<sup>2</sup>):

- 3D measurements
- Pre-engineering
- Detail engineering
- Project management
- Building and assembly
- Preparation piping and mounting plates equipment
- Installation



## Reference projects

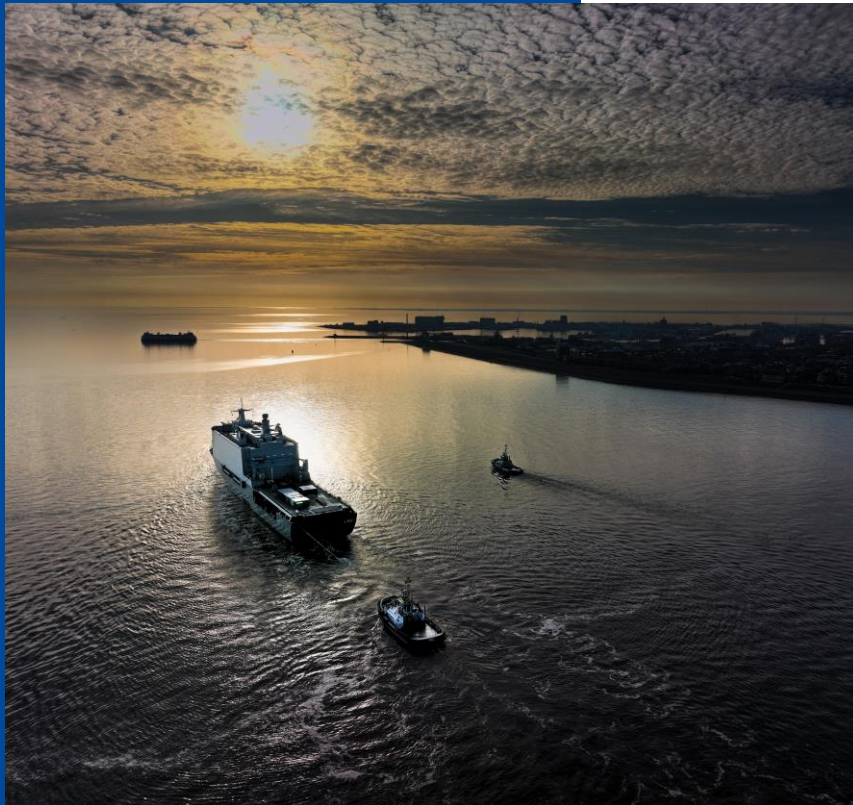
### Composite superstructure (830m<sup>2</sup>):

- 3D measurements
- Pre-engineering
- Detail engineering
- Project management
- Consultation Class (Lloyds)
- Building and assembly
- Preparation piping & mounting plates equipment
- Ready for painting and installation



## Benefits of VABO Composites

- Weight reduction (50% vs steel)
- Water, weather and gastight
- Shock approved
- Turn key (tested in VABO workshop)
- Adjustable toggles and hinges
- Class certified
- Fire resistance
- Easier in usage
- Low maintenance
- Function integration





## References





# CONTACT INFO

**Jeroen van Deutekom**

T +31 527 685 048

M +31 657 86 99 25

E [jeroen@vabocomposites.com](mailto:jeroen@vabocomposites.com)

E [info@vabocomposites.com](mailto:info@vabocomposites.com)

E [sales@vabocomposites.com](mailto:sales@vabocomposites.com)

[www.vabocomposites.com](http://www.vabocomposites.com)

**Head office**

Randweg 22

8304 AS Emmeloord

The Netherlands

**Subsidiary**

VABO Italia

[www.vaboitaliacomposites.it](http://www.vaboitaliacomposites.it)

**Service location**

MB92 Barcelona

Passeig Joan de Borbó, 92

08039 Barcelona

Spain

